



BIO

# FITOClima 600 & 1200 BIO



REACH-IN CHAMBERS FOR BIOLOGICAL RESEARCH



FitoClima 600



FitoClima 1200 (optional double glazed door and high performance lights)





Common applications include:

**Plant Growth**  
**Tissue Culture**  
**Arabidopsis**  
**Germination**  
**Incubation**  
**Entomology**  
**Insect storage**  
**Other life sciences applications**

FitoClima Bio chambers provide the control and flexibility to meet the evolving needs of researchers and research requirements through time.



## ARALAB

ARALAB is a company specialized in designing, developing, manufacturing and servicing of high quality climatic chambers and controlled environment rooms.

Since 1985 we have been perfecting ways to create and control temperature, humidity, light, pressure and many other environmental conditions.

Only the highest quality components are used to manufacture our chambers so customers can have the best equipment for their research and testing purposes.













Aralab. Your own climate.

## KEY FEATURES





- Ready to use. No assembly needed
- Minimal footprint for efficient use of laboratory space
- Adaptive future proof design, with easily removable and height adjustable shelves and changeable light canopies with multiple intensities
- Research protection, with configurable high / low temperature and humidity alarms and automatic remote notifications
- Stainless steel interior for maximum resistance, easy cleaning and light uniformity near the edges
- Multiple lighting options to suite any research requirements and stages of plant development

## TECHNICAL SPECIFICATIONS



### TECHNICAL DATA FOR FITOCLIMA 600 & 1200 BIO CHAMBERS

	TEMPERATURE RANGE <sup>[1]</sup>	LIGHTS ON LIGHTS OFF	+5°C to +45°C -5°C to +45°C
	TEMPERATURE PRECISION		± 0,5°C
	TEMPERATURE UNIFORMITY		± 1,0°C
	HUMIDITY RANGE	LIGHTS ON LIGHTS OFF	40 to 80% RH 40 to 90% RH
	HUMIDITY PRECISION		± 1% RH
	HUMIDITY UNIFORMITY		± 2% RH
	SHELVES / LIGHT BANKS		FitoClima 600: 1 to 4 shelves with controlled lighting FitoClima 1.200: 2 to 8 shelves with controlled lighting
	GROWTH HEIGHT		Adjustable from 150mm up to 1.330 mm
	GROWTH AREA		0.34m <sup>2</sup> per shelf
	LIGHTING TYPES AND INTENSITY <sup>[2a]</sup>	Maximum number of shelves by light type:	
	Intensity per shelf	Light Type	FitoClima 600 FitoClima 1.200
	250 µE/m <sup>2</sup> s (18.500 Lux)	4x18W fluorescent, dimmable	4 8
	500 µE/m <sup>2</sup> s (37.000 Lux)	8x18W fluorescent, dimmable	2 4
	650 µE/m <sup>2</sup> s (48.100 Lux)	4x55W PLL fluorescent, dimmable	2 4
	1.200 µE/m <sup>2</sup> s (88.800 Lux) <sup>[2.b]</sup>	8x55W PLL fluorescent, dimmable	1 2
	LED with fixed wavelengths <sup>[3]</sup>	LED Grow Master, dimmable	4 8
	LED with adjustable wavelengths <sup>[3]</sup>	LED Flex Growth, dimmable	4 8
	AIRFLOW <sup>[4]</sup>		0.2 m/s across the shelves
	INTERNAL VOLUME		600 and 1.200 liters

### INSTALLATION REQUIREMENTS

	WATER (FOR MODELS WITH HUMIDITY CONTROL)	Distilled or demineralized water. 1 to 6 bar pressure and ≤ 10µ siemens conductivity.
	WATER DRAIN	Advisable: located at floor level and near the equipment, with a minimum inclination of 10° from chamber to drain
	WEIGHT	FitoClima 600: 175 Kg FitoClima 1.200: 250 Kg
	ELECTRICAL CONNECTION	1PH AC 230V ±10% 50Hz 5 to12A (depending on model)

### FITOCLIMA MODELS REFERENCE – STANDARD CONTROLLED ENVIRONMENT VARIABLES <sup>[5]</sup>

FITOCLIMA 600/1200 P		Temperature only
FITOCLIMA 600/1200 PL	 	Temperature and Light
FITOCLIMA 600/1200 PH	 	Temperature and Humidity
FITOCLIMA 600/1200 PLH	  	Temperature, Light and Humidity
FITOCLIMA 600 PDH	 	Temperature and Low Humidity (ambient down to 5% RH)

[1] Temperature / Humidity range extension available. Please contact Aralab for other technical requirements

[2a] Measurements at 150mm from light source at 25°C

[2b] Intensity also available with "Low Temperature (0°C) + High Performance Lighting (1.200 µE/m<sup>2</sup>s) kit" as an option

[3] Consult the Accessories page for more information on available LED spectrum and intensity

[4] Optional variable airflow velocity adjustable on the controller

[5] Other climatic and environmental variables can be integrated as an option (CO<sub>2</sub>, O<sub>2</sub>, pressure, rain, wind and more)

## DIMENSIONS AND DRAWINGS

### FITOCLIMA 600



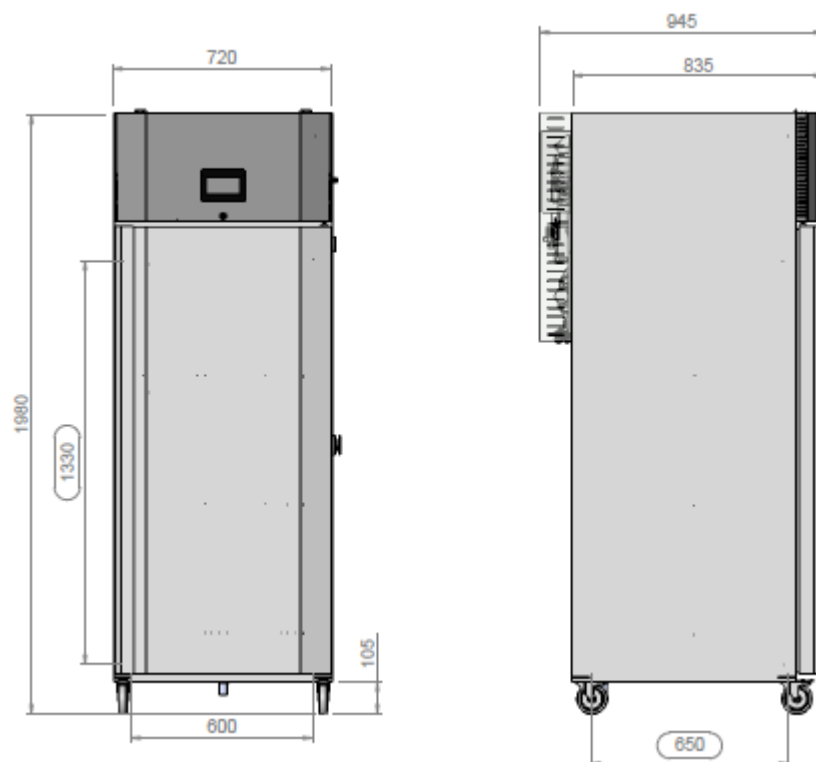
**EXTERNAL DIMENSIONS**  
(HxWxD) (mm)

1.980 x 720 x 945



**INTERNAL DIMENSIONS**  
(HxWxD) (mm)

1.330 x 600 x 650



FITOCLIMA 1.200



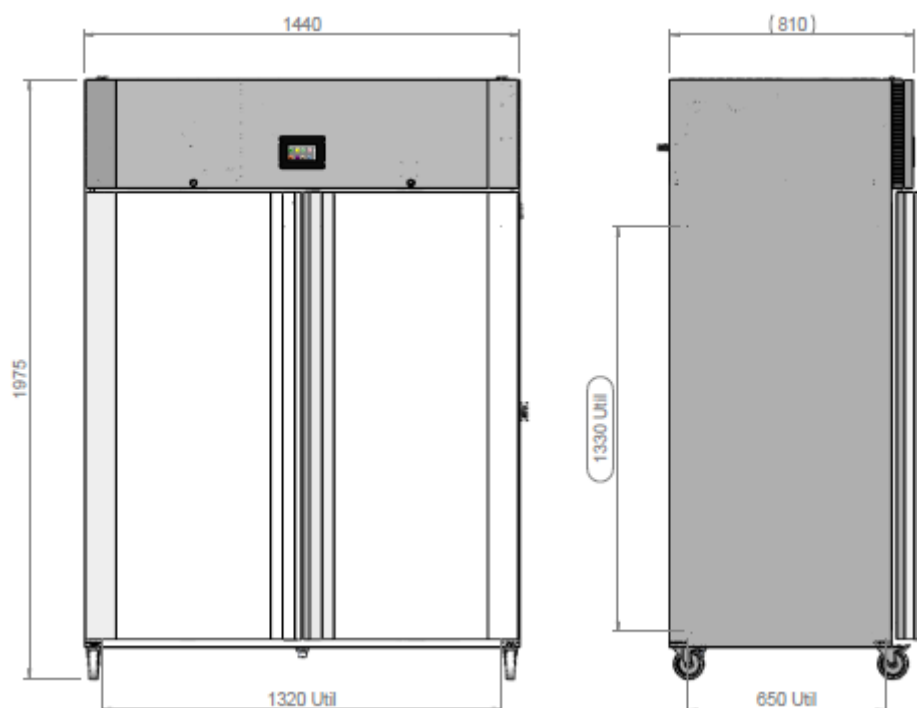
**EXTERNAL DIMENSIONS**  
(HxWxD) (mm)

1.975 x 1.440 x 810



**INTERNAL DIMENSIONS**  
(HxWxD) (mm)

1.330 x 1.320 x 650



## EQUIPMENT DESCRIPTION

### CONSTRUCTION

- Highly resistant stainless steel in the interior and exterior
- Polyurethane insulation
- Front panel with zincor steel and gray epoxy paint
- Pivoting door(s) with spring lock, magnetic gasket and safety lock(s)
- 4 or 6 casters with built in brakes for effortless mobility and control
- 50mm diameter side port
- New generation multi-color touch-screen ClimaPlus© controller
- Open door alarm with configurable time-out function
- Free slots for connecting and integrating external devices (CO2 and/or O2 control, Auto Irrigation, Radiometers and many other) on the ClimaPlus controller
- Accessible technical compartment for faster maintenance procedures



### CLIMATIC CONTROL

- Air based, CFC free, mechanical refrigeration by sealed condenser group
- Dual heating technology with hot gas by-pass and stainless steel electric heaters
- Humidification by ultrasonic generator with automatic water level control and self-cleaning function
- Dehumidification by condensation on the cooling system evaporator
- PT100 Class A temperature sensor and capacitive humidity sensor



### AIR FLOW

- Dynamic airflow with EC (variable) blower
- Air renovation through adjustable lateral port-holes
- Uniform air velocity of 0.2 meters per second across shelves
- Optional Airflow velocity adjustable at the ClimaPlus© controller



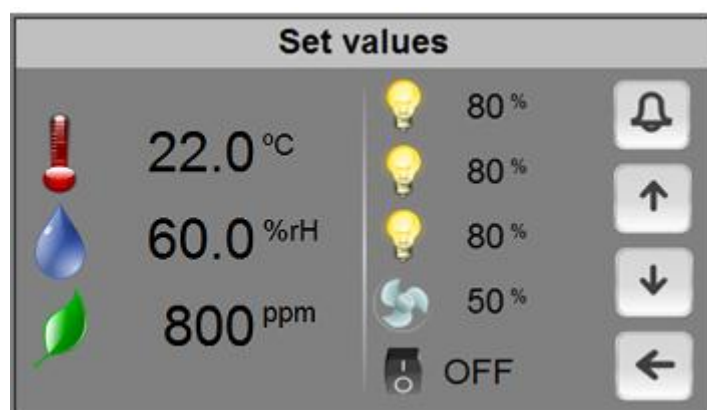
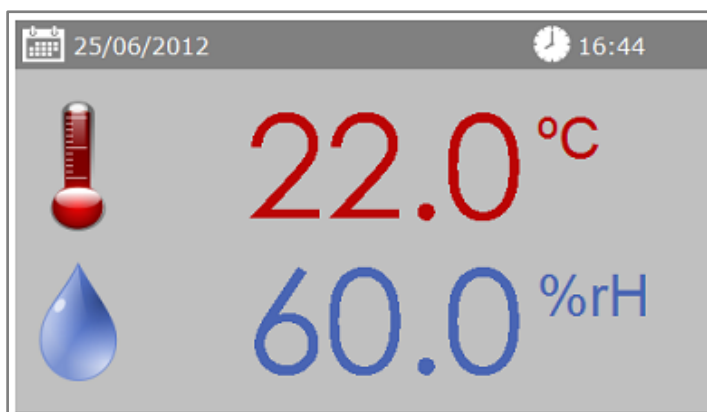
### RESEARCH PROTECTION AND SECURITY

- Independent thermostats for maximum and minimum temperature limits
- Automatic cut-off function, in case of excessive heating or cooling
- Configurable maximum and minimum temperature and humidity limits
- Visual and audible alarms for temperature and humidity band limits



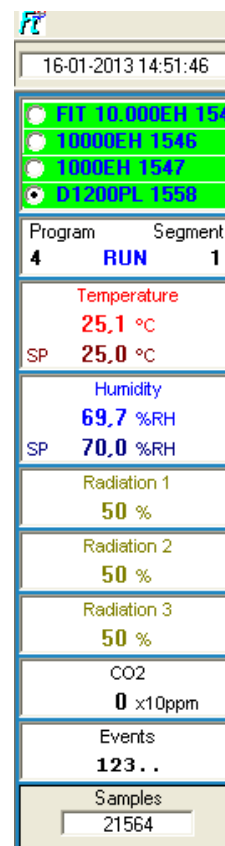
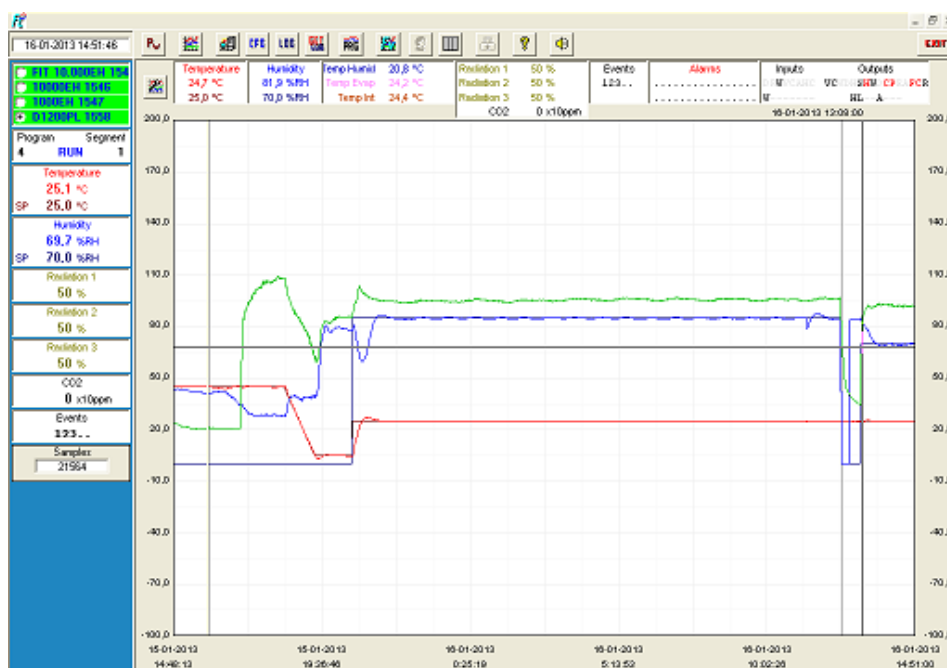
## CLIMAPLUS CONTROLLER

- Programmable Logic Controller exclusively developed by Aralab for FitoClima chambers
- Easy to use touch-screen interface
- 168mm x 112mm multicolor display
- Controls every environmental variable available for any specific FitoClima model (Temperature, Humidity, Lights, Airflow, CO2, O2 and connected external devices)
- Friendly program editor for creating 32 programs of 24 segments each, allowing the design of complex and comprehensive climatic simulation programs
- Password protection of the controller functions
- Content and research protection feature, with configurable High and Low Temperature and Humidity alarms and automatic notifications
- Managing, monitoring and recording of all alarms
- Non-volatile memory, allowing the automatic restart of previously defined set-points or on-going programs due to power failure, without losing data
- Real-time monitoring of all the functions and active components of the equipment, allowing for a fast and accurate diagnostic in case of malfunction
- Possibility to control and program events by external commands and with external devices
- Graphical view of programs and climatic variables
- RS232/485, Ethernet and Wi-Fi for connecting computers to the controller
- ClimaPlus controller functions also available at the PC/Laptop with the FitoLog software pack

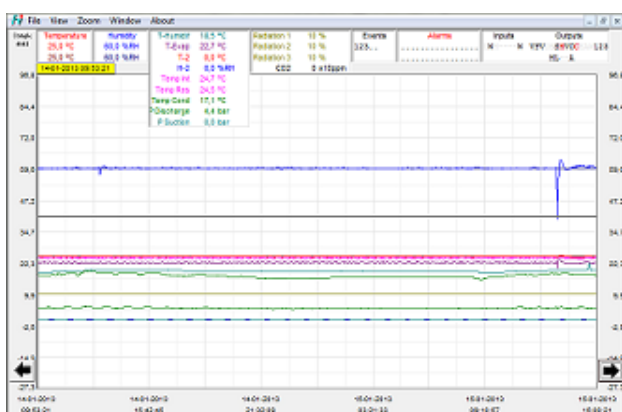


## FITOLOG SOFTWARE

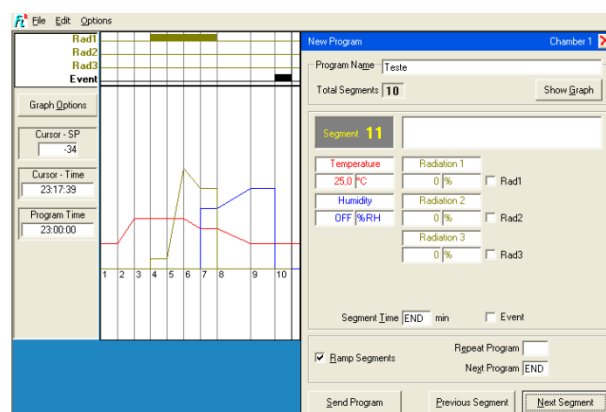
The FitoLog software pack is a set of applications designed to facilitate the managing, monitoring and recording of programs and data from the FitoClima chambers. It consists of 3 applications: **FitoLog**, **FitoLogView** and **FitoProgram**.



**FitoLog:** Records and displays in real time all data and details related to the set-points, running variables and equipment behaviour. It also retrieves information about the active components of the chamber, running processes, errors, alarms and allows the configuration of periodic or alarm triggered remote notifications (by email or SMS, depending on existing connections and accessories).



**FitoLogView:** It is a working tool to process the data recorded by the FitoLog program. One can view, print and export the log contents to other file types, and analyse the data in other data management software (Excel, Star Office, Access or others).

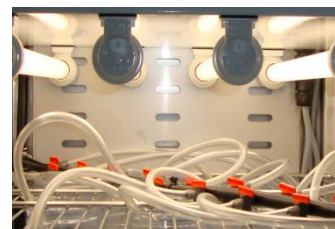


**FitoProgram:** This application simplifies the creation of programs and its integration on the chamber ClimaPlus controller. Up to 32 programs, each with 24 segments, can be designed and linked to create detailed environmental profiles and simulations.

**Research secured with alarms, notifications, fast diagnostics and prompt troubleshooting:** With **FitoLog** it is possible to gather data from each of the chambers systems, which makes it a very useful tool to diagnose any necessary maintenance. This tool works as the “black box” of the equipment, giving Aralab technicians the necessary data to remotely carry out a fast and efficient diagnostic. All that is needed is a FitoLog file.

## COMMON ACCESSORIES (PLEASE CONSULT ARALAB FOR OTHER AVAILABLE ITEMS)

- FitoLog® software pack for PC/Laptops, enabling data monitoring, logging and managing operations directly on a computer
- Ethernet / Wi-Fi and other connections
- IRGA CO2 controlling unit
- O2 controlling unit
- Automatic irrigation kit
- 25 litre water tank with electric pump and security valve
- Wall mounting conductivity meter, for water quality control
- 5 stage Reverse Osmosis with pre-decalcification water treatment system
- HEPA/Charcoal Air Filter for negative/positive in-pressure
- Double glazed glass doors
- Phenolic resins coating for Entomology/Insects kit
- Additional stainless steel wire shelves
- Low Temperature (-0°C) + High performance lighting kit (1.200µE/m²s)
- LED Grow Master light level ( $\pm 250 \mu E / m^2s$ ) / shelf
- LED Flex Growth light level with independent Blue, Red and Far Red wavelength adjustment on the controller



Standard 4x18W fluorescent light



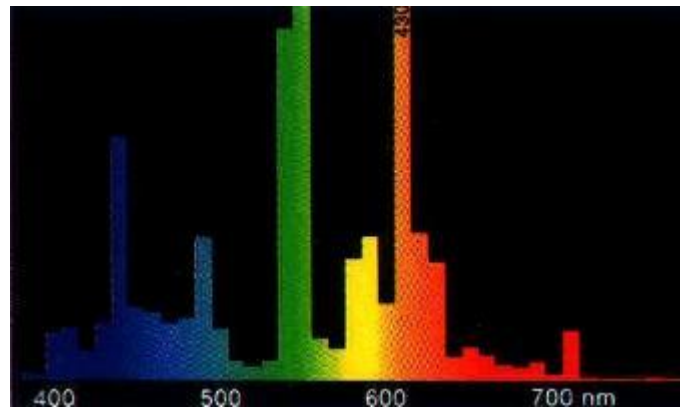
Optional LED Grow Master light



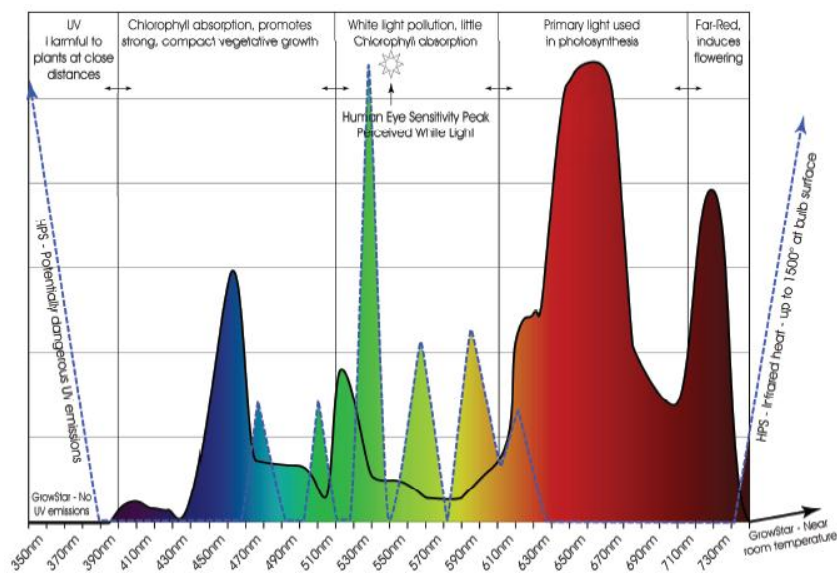
Optional LED Flex Growth with configurable Blue, Red and Far Red wavelength intensities



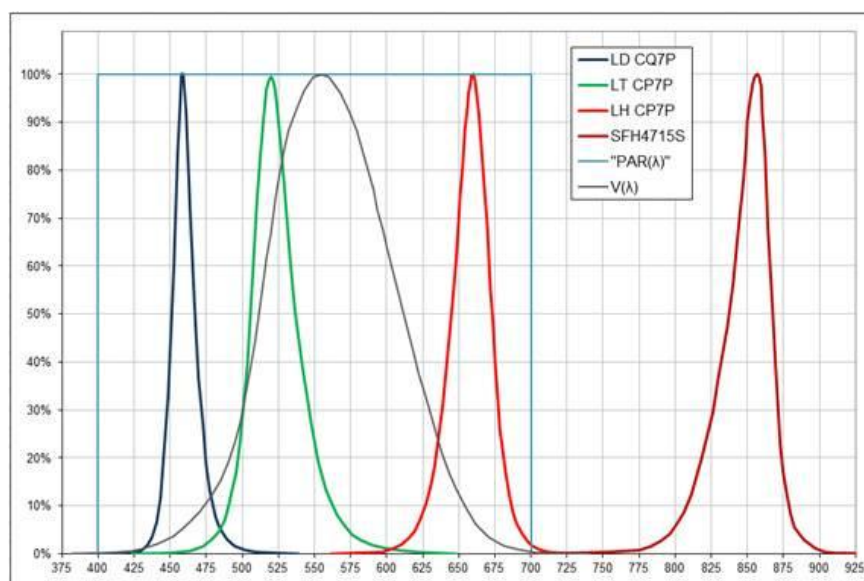
Optional high performance 4 (or 8) x 55W PLL lights



Spectrum of standard 18w fluorescent lights



Spectrum of LED Grow Master light (black line on the graphic)



Spectrum of LED Flex Grow light that allows independent adjustment of the Blue, Red and Far Red wavelengths

## SOME EXAMPLES OF INTERIOR CONFIGURATIONS

(CUSTOMER SPECIFICATIONS AND ACCESSORIES MAY RESULT IN DIFFERENT PRODUCT IMAGES)

FitoClima 600 P/PH (no light control)



FitoClima 600 PL/PLH with 2, 3 and 4 shelves and standard performance lights



FitoClima 1200 PL/PLH with 4 high performance light



FitoClima 1200 PL/PLH with "Low Temp + High performance" kit



**FitoClima chambers provide maximum flexibility to meet the evolving needs of research requirements.**

Light banks can be easily removed or changed by new ones with different intensities; similarly, shelves can be effortlessly removed or re-adjusted in height so that both short and tall plants can be fitted inside.

**Features and specifications are subject to change.** Aralab continuously studies ways to further develop its products to achieve better performances and overall product quality. As a result, characteristics and specifications provided in this document may be subject to changes.

**YOUR OWN CLIMATE**  
Our main goal

**Let's meet!**  
aralab@aralab.pt  
www.aralab.pt  
T: +351 219 154 960